

Technical data sheet

ARTICULATED EXTRACTION ARMS

IBS

Self-supporting articulated arm for wall installation



APPLICATIONS



MIG MAG



MIG MAG
PULSATO



MMA SALDATRICI
AD ELETTRODO

Extraction of fumes and micro-particulate from welding or industrial processes.
Wall installation in a hose circuit.

FEATURES

Wall-mounted self-supporting, articulated arm, lightweight aluminium alloy construction, complete with wall bracket and extraction hood.

CERTIFICATIONS



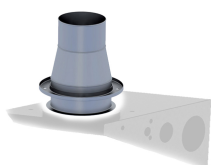
TECHNICAL DATA

N.B.: Also available in the 2-joint versions (for environments with height restrictions) or fixed versions (for example, laboratories).

MOD.	Ø	LENGTH	FLOW RATE	HEAD LOSS	TOTAL WEIGHT
IBS	mm	mm	m ³ /h	Pa	Kg
125/2	125	2000	from 700 to 1000	media 800	12
125/3	125	3000	from 700 to 1000	media 800	15
125/4	125	4000	from 700 to 1000	media 800	20
160/2	160	2000	from 1200 to 1800	media 700	18
160/3	160	3000	from 1200 to 1800	media 700	26
160/4	160	4000	from 1200 to 1800	media 700	30
160/5	160	5000	from 1200 to 1800	media 700	35
200/2	200	2000	from 1800 to 2500	average 600	26
200/3	200	3000	from 1800 to 2500	average 600	30
200/4	200	4000	from 1800 to 2500	average 600	36

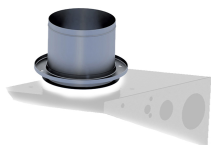
ACCESSORIES

SLEEVE FOR HOSE CONNECTION Ø125 mm.



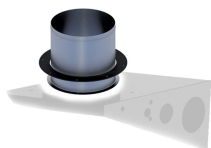
Fitting for IBF articulated arm for the connection of wall-mounted shelves with flexible hose on centralised systems or installation for remote extraction fan connection.
Galvanised steel rimmed sleeve for flexible hose connection Ø125 mm.
The performance data was measured using the appropriate instruments in our laboratories.

SLEEVE FOR HOSE CONNECTION Ø160 mm.



Fitting for IBF articulated arm for the connection of wall-mounted shelves with flexible hose on centralised systems or installation for remote extraction fan connection.
Galvanised steel rimmed sleeve for flexible hose connection Ø160 mm.
The performance data was measured using the appropriate instruments in our laboratories.

SLEEVE FOR HOSE CONNECTION Ø200 mm.



Fitting for IBF articulated arm for the connection of wall-mounted shelves with flexible hose on centralised systems or installation for remote extraction fan connection.
Galvanised steel rimmed sleeve for flexible hose connection Ø200 mm.
The performance data was measured using the appropriate instruments in our laboratories.

“EV” SERIES ELECTRIC CENTRIFUGAL EXTRACTION FAN



“EV” electric centrifugal extraction fans are preconfigured for fixing to the wall-mounted shelf of articulated arms.
Manufactured from galvanised steel with forward blades, unel-mec ip55 electric motor.
Supplied with preassembled insert for fixing to the extraction arm shelf.
Special voltage upon request.
Special configurations (ATEX, STST) upon request.

MOD.	MAX. FLOW RATE	MAX. PRESSURE	INSTALLED POWER	ARRANGED FOR
	m ³ /h	Pa	Kw	MOD.
EV 15	1800	1500	1,1	ARMOFLEX
EV 18	2300	1580	1,5	ARMOTECH
EV 30	3000	1200	2,2	CLASSIC



PAB



Extender for articulated extraction arms.

ELECTRICAL PROTECTION PANELS FOR EXTRACTION FANS



Electrical panel for start-up and circuit-breaker protection for extraction fans EV 15 / EV 18 / EV 30.

FLOOR STANDING SUPPORT



Universal column pre-drilled for wall-mounted shelf 700x700 mm.
Anti-reflection coating grey RAL 7032.

PACKAGING



WEIGHT 35 KG
VOLUME m³ 0.39 (230X28X61 cm.)

QR CODE

