

Spot-welding equipment

GYS

Ref. 019898

GYSPOT 32D.C

GYSPOT 32D-C is a convenient equipment for car body welding. This traditional A.C. spot-welder performs quality spot welds with new body car steel including high strength steel. Thanks to its new electronics controller, programming is very easy. In automatic mode, the user needs only to select steel thickness. In manual mode, the user programs the welding time and the welding current. The aluminium made clamp is lightweight and easy to handle. The clamping force can reach 300 daN with 7 bar air pressure. This A.C. spot welder has an excellent ratio price/performance.

DESCRIPTION

Ideal clamp for all types of metal works

- Lightweight and easy to handle: Weight : 5 kg
- Electrode with 360° swivel connection
- Single-sided welding tool with 2.5 meter cable: spot hammer welding, nut, bolt and rivet welding, carbon shrinking
- Accessory box
- Support cable bracket
- 32 Amps breaker (D curve)

**7 500 A
300 daN**

PERFORMANCE

- Welding current :
 - Welding current 7 500 A
 - Forced air-cooling system for cables
 - 200 mm² cross-section Welding cables
 - Modes : one and four pulses.
- Electrode force:
 - Aluminium made electrodes
 - Clamping force : 300 daN with at 7 bar
 - Front pressure regulator.

**Welding
HSS steel**



Not contractual picture

MAN/ MACHINE INTERFACE

Easy to use control panel.

Automatic mode:

Select reference steel plate thickness.

Manual mode :

Select welding time and welding current

INCLUDED

Monopoint/Spot welding
Ref. 049291



Spotter Box Pro
Ref. 050075

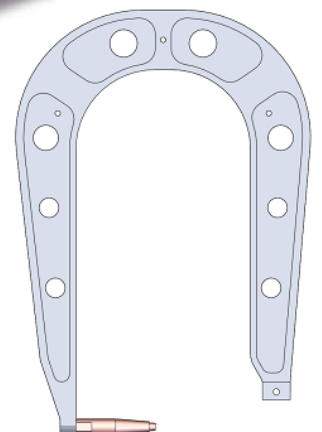
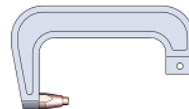


Inertia hammer
Ref. 049482 + 049802



Delivered with a set of 3 arms RC1 RC2 RC3

LxP= 106X34 mm LxP= 160X80 mm
incliné à 15°



LxP= 220X450 mm

50/60Hz	A	RMS A	mm		U ₀ V	Câbles			100% Cu	cm	kg
			AIR COOLED	L		Ømm ²					
2x400	32 (D)	7500	3+3	1,2+3	11	•	2,2m	200	•	55x75 x190	100
						•	2,5m	150			
						—	8m	3x6 H07RNF			



NF EN 50063



INVEST IN THE FUTURE

Email : contact@gys.fr

www.gys.fr